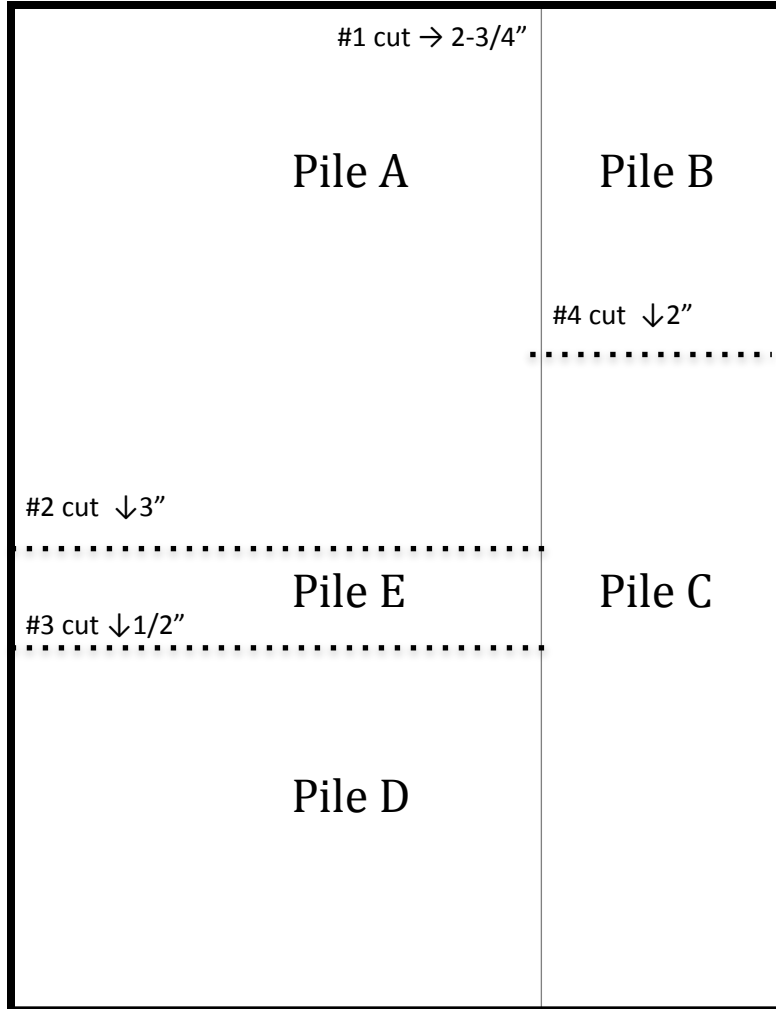


Stampin' Pattern - Patchwork Stack & Cut Cards



Use this pattern to make 5 cards at one time.



Supplies Needed

- 4" x 5 1/4" DSP, cut 4
- 4" x 5 1/4" cardstock, cut 1
- 5 1/2" x 8 1/2" cardstock, cut 5
- 4" x 5 1/4" Basic White or copy paper (optional)
- cardstock scraps for punched focal points
- Ribbon and embellishment
- Embossing folder of choice

Tips for Success

- Take note of the patterns on the paper you select and be sure they are going in the direction you want. My example cards have all the patterns going vertically but it doesn't need to be that way.
- Cut all the pieces of paper stacked together at one time if possible to ensure the pieces are the same sizes. Keep the pieces in order in each pile to make the shuffling process easier.

Directions for Cutting the DSP

1. Use an embossing folder to emboss the 4" x 5 1/4" piece of cardstock.
2. With all 5 sheets layered together and patterns vertical (if you want), make the first cut at 2-3/4" along the 4" edge so that you have 2-3/4"x 5-1/4" and 1-1/2"x 5-1/4" piles of pieces. Set the 1-1/2" pile aside.
3. Turn the pile of 2-3/4"x 5-1/4" pieces horizontally and cut at 3" along the long side and then again at 1/2". Set these 3 piles aside keeping the patterns in the same order.
4. Turn the pile of 1-1/2"x 5-1/4" pieces and cut at 2" along the long side.

Stampin' Pattern - Patchwork Stack & Cut Cards



Use this pattern to make 5 cards at one time.



Directions for Shuffling the DSP piles

1. Working clockwise around the piles start with the top right pile, Pile B, and shuffle the top paper to the bottom of the pile.
2. Shuffle the top two papers to the bottom for pile C.
3. Shuffle three papers to the bottom for pile D.
4. Lastly shuffle four papers for Pile E. Now all the piles should have a different paper on the top of each pile.

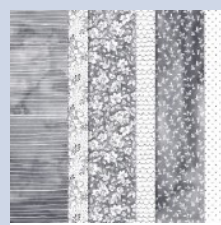
Directions for Assembling the Patchwork cards

1. Working clockwise around the piles again starting with pile A this time, take the top paper from each pile and attach to a piece of 4" x 5 1/4" Basic White card stock; reassembling the pieces like patchwork. This creates the first card front.
2. Continue attaching the next round of pieces from the tops of the piles to create the second card front.
3. Continue in the same way for the remaining three rounds of pieces so that you end up with 5 card fronts. (If you are opting to NOT use the Basic White pieces to first glue the pieces on then you will be adhering the pieces directly to the card base.)
4. Attach all the card fronts to the card bases.
5. Add the punched sentiment focal points to the card fronts (a great location for this focal point is over the seams where multiple pieces meet).

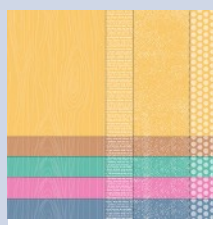
Stampin' Pattern - Patchwork Stack & Cut Cards



Use this pattern to make 5 cards at one time.



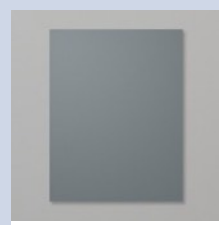
Beautifully Penned 12" X 12" (30.5 X 30.5 Cm) Designer Series Paper
[\[156630\]](#)
 \$0.00



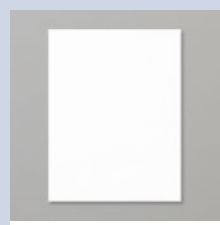
2020-2022 In Color 6" X 6" (15.2 X 15.2 Cm) Designer Series Paper
[\[153070\]](#)
 \$11.50



Magenta Madness 8-1/2" X 11" Cardstock
[\[153080\]](#)
 \$8.75



Basic Gray 8-1/2" X 11" Cardstock
[\[121044\]](#)
 \$8.75



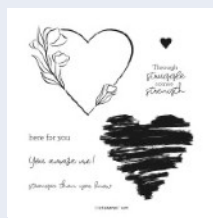
Basic White 8 1/2" X 11" Cardstock
[\[159276\]](#)
 \$9.75



Pretty Flowers Embossing Folder
[\[155428\]](#)
 \$7.50



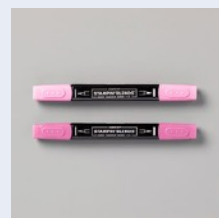
Heart Punch Pack
[\[151292\]](#)
 \$34.00



Strong Of Heart Cling Stamp Set (English)
[\[156376\]](#)
 \$20.00



Rhinestone Basic Jewels
[\[144220\]](#)
 \$5.00



Magenta Madness Stampin' Blends Combo Pack
[\[153106\]](#)
 \$9.00



Magenta Madness 1/4" (6.4 Mm) 2020-2022 In Color Ribbon
[\[153623\]](#)
 \$6.00